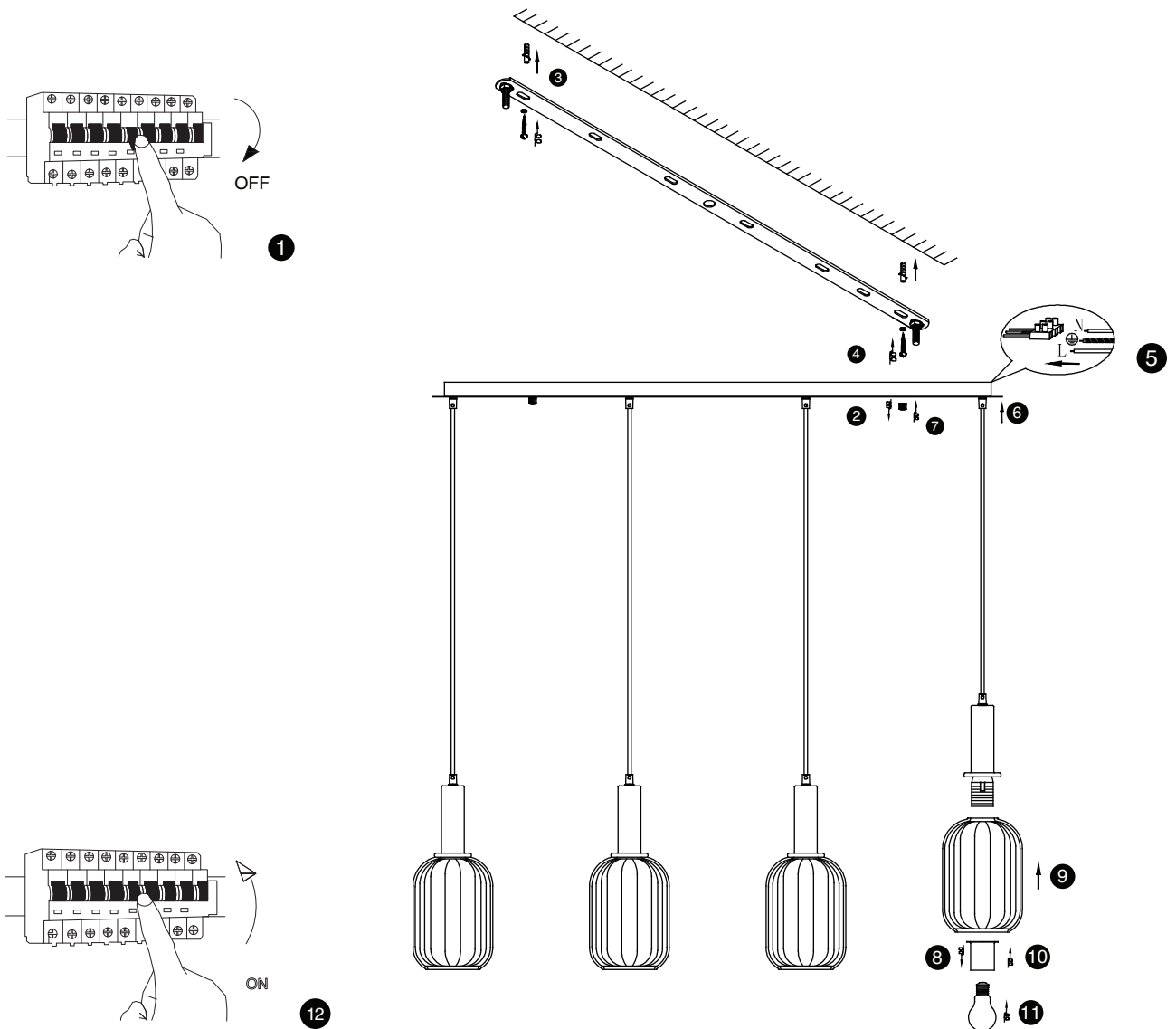


# NOVA LUCE

9236315



1. Turn off the general switch
2. Remove the cap
3. Drill holes & Apply plastic anchors
4. Apply screws
5. Connect the wires
6. Place the product into place
7. Apply the cap by tidying it up
8. Remove the cap
9. Insert the lid by rotate
10. Apply the cap
11. Insert the bulb by rotate
12. Turn on the general switch

