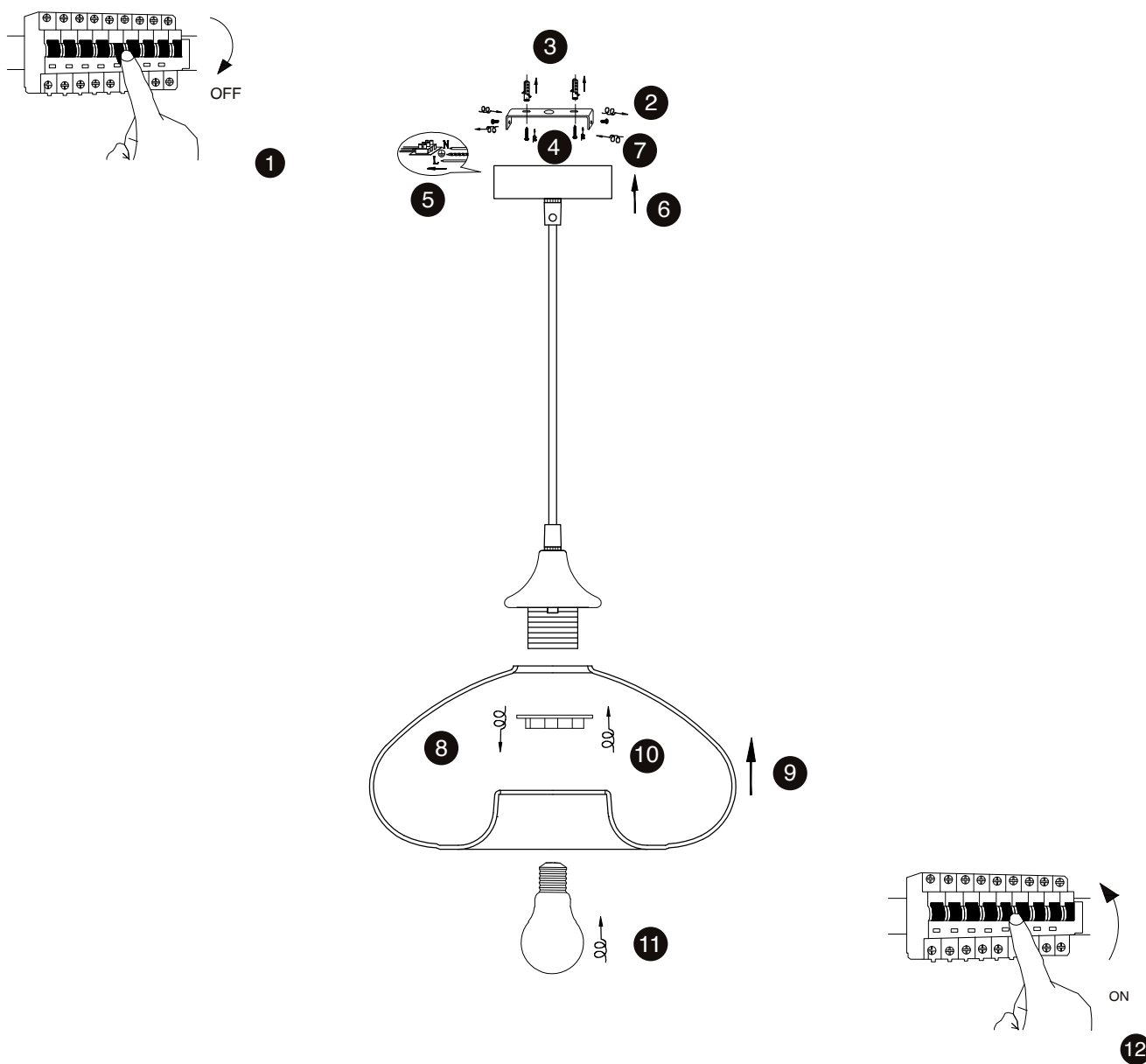


NOVA LUCE

9726482



1. Turn off the general switch
2. Untight the side screws
3. Drill holes, apply plastic anchors
4. Fix the base by applying screws
5. Connect wires
6. Put the canopy in place
7. Apply the side screws
8. By rotating untight the cap
9. Put the glass in place
10. Tie up the cap onto place
11. Apply the bulb by rotate
12. Turn on general switch

