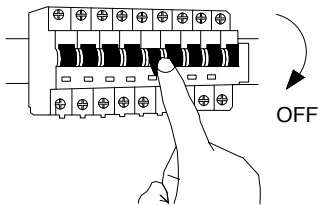


NOVA LUCE

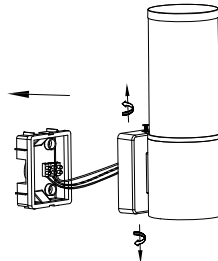
9060181

1



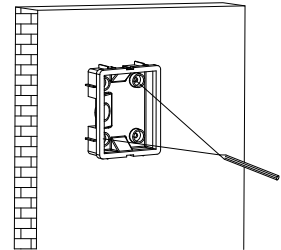
Turn off the general switch

2



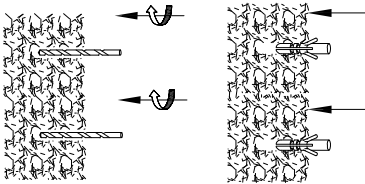
Remove the side screws

3



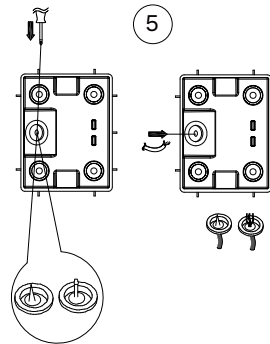
Mark where to drill

4



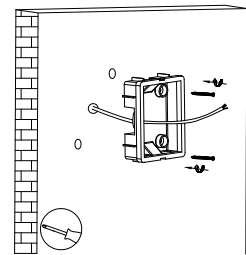
Apply plastic anchors with screws

5



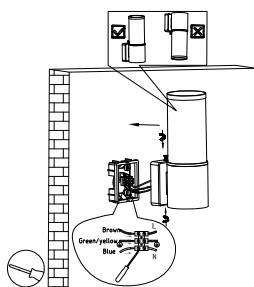
Make a hole for the wire

6



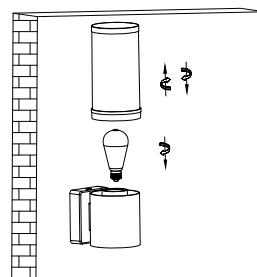
Get the wire through the hole

7



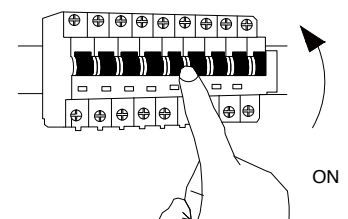
Connect the wires

8



Remove the shade, apply the bulb & Reapply the shade

9



Turn on the general switch



**In order to change the bulb. Turn off general switch for safety purposes

www.novaluce.com