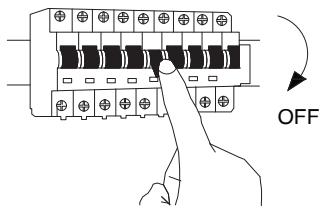


NOVA LUCE

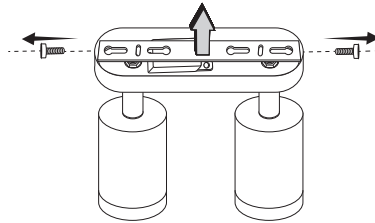
9011414, 9011415

1



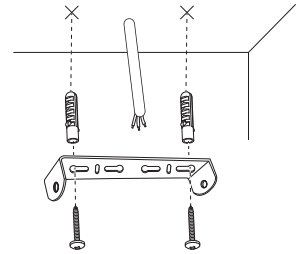
Turn off the general switch

2



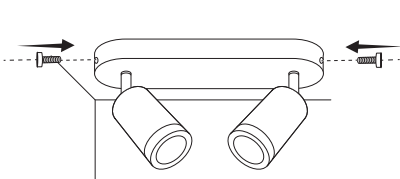
Dismantle parts

3



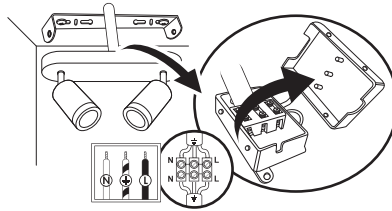
Mark holes, drill holes,
apply plastic anchors
& tie up screws

4



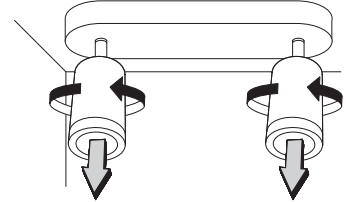
Tie up side screws

5



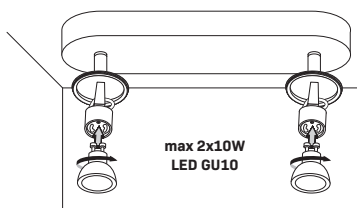
Connect wires

6



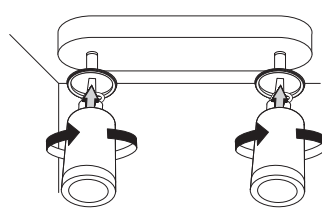
Untie the caps

7



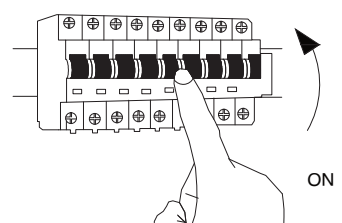
Apply the bulbs by rotate

8



Apply the caps by rotate

9



Turn on the general switch

10

