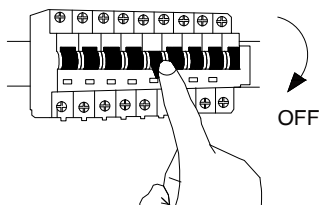


# NOVA LUCE

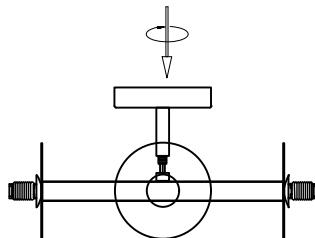
9043316

1



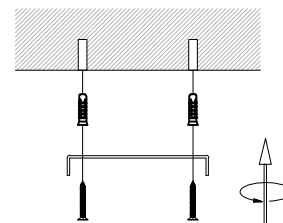
Turn off the general switch

2



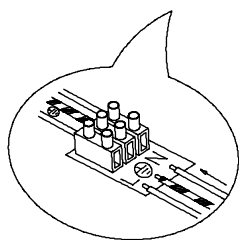
Adjust it into position

3



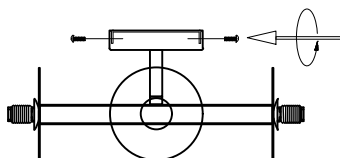
Mark & drill holes  
Apply plastic anchors & tie up screws

4



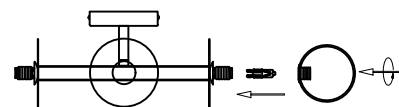
Fix it into place  
by tying up the screws

5



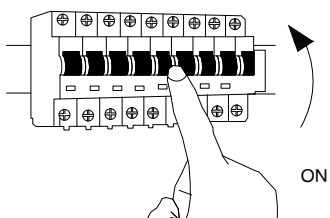
Apply side screws to make it stable

6



Insert bulbs by rotate  
& tie up the caps

7



Turn on the general switch

