

WARNING!

Please read the following instructions carefully

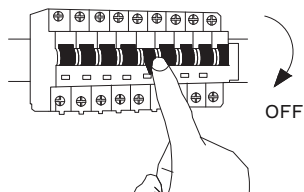
IMPORTANT:

Although LED runs on a very low voltage,

always cut off the power supply before installing the LED light or subjecting it to maintenance.

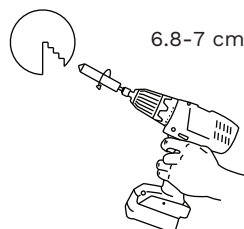
Unauthorized alterations or tampering of the product will invalidate all the conditions of guarantee.

①



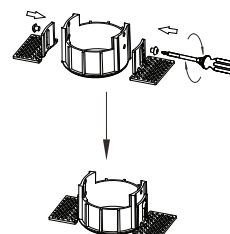
Turn off the general switch

②



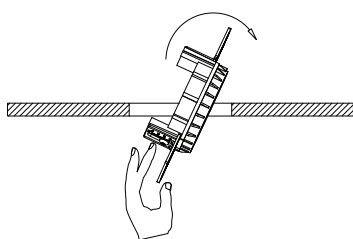
Drill holes

③



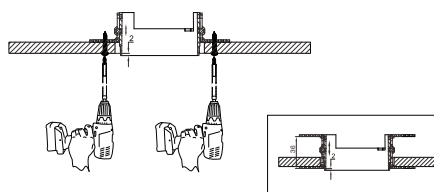
Apply side screws & connect parts

④



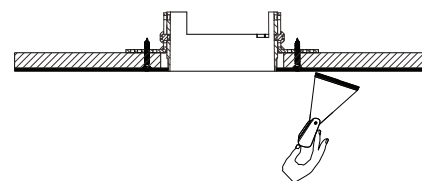
Insert the product into the cutout

⑤



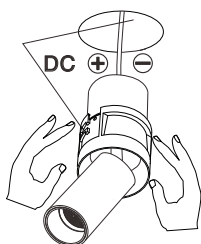
Make it stable by applying screws

⑥



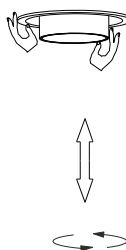
Fix the holes by making it dry

⑦



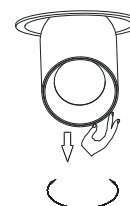
Connect wires & fix it place

⑧



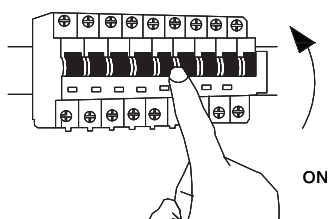
Adjust it in place

⑨



Rotate the product from the bottom to make it stable

⑩



Turn on the general switch

⑪

