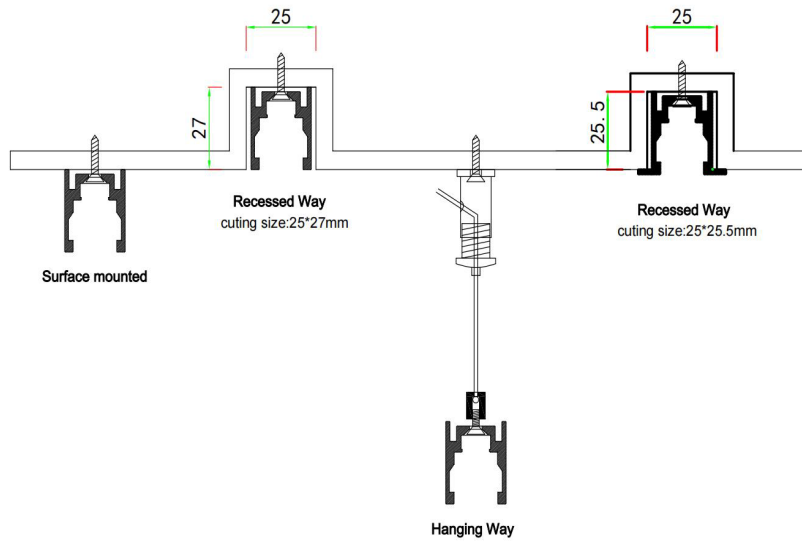


## 1. Install the track

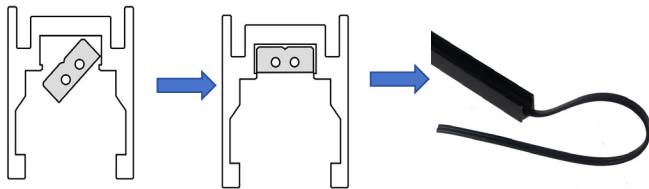
(different tracks have different installation methods as shown below, please choose the corresponding one)



## 2. Install the track wire

Please place the wire at an angle of 45°, along the track, place one side first, and press it forward, then it can be completely inserted into the groove. As shown below.

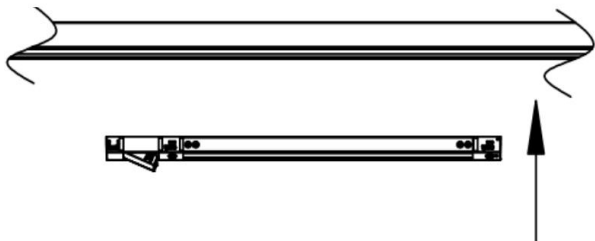
Noticed: The side of the wire with the words needs to be close to the inside of the track (after the construction is completed, the words are not visible in the entire track).



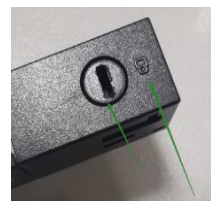
## 3. Installation of lamps

Please take out the protective cover first, and then unlock the "needle switch" of the lamp. According to the direction of the arrow on the lamp body, use a screwdriver to pry it open on the side to unlock it. Finally, embed the lamp in the track groove.

Noticed: The side of the wire with the words needs to be close to the inside of the track (after the construction is completed, the words are not visible in the entire track).



Press the button down, and the light can be energized if it is flat.



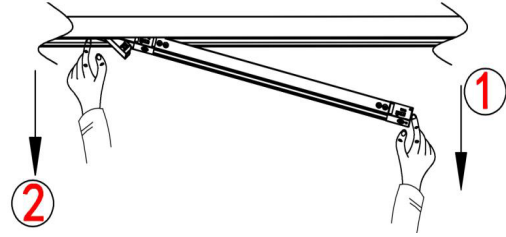
#### 4. Disassembly the lamp

Use a screwdriver to unlock the ends of the lamp. (90° rotation)



#### Option 2)

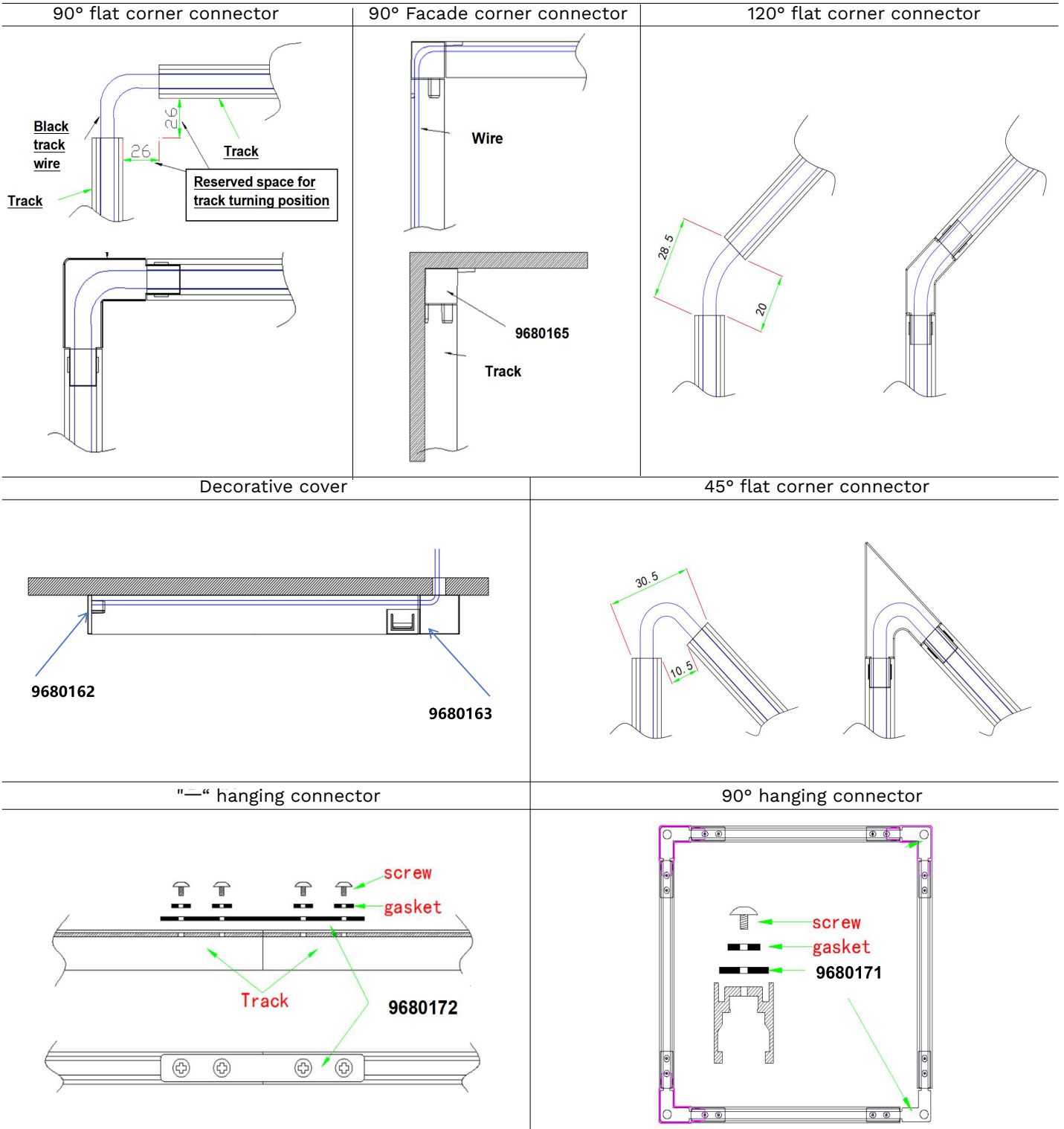
The position of 1. is the end without acupuncture, please take out the single and first  
The position of 2. is the acupuncture end then take it out



#### 5.Track accessories informations

| NO | Name                             | Number           | Picture | Description   |
|----|----------------------------------|------------------|---------|---|
| 1  | Decorative cover                 | 9680162          |         | Used for installation of end caps at ends of track      |
| 2  | Decorative cover                 | 9680163          |         | Used for installation of end caps at beginning of track |
| 3  | 90° flat corner                  | 9680164          |         | Combined with square track                              |
| 4  | 90° Facade corner                | 9680165          |         | Combined with the track from ceiling to the wall        |
| 5  | 90° Facade corner                | 9680166          |         | Combined with the track                                 |
| 6  | 120° flat corner                 | 9680167          |         | Combined with the track                                 |
| 7  | 90° connectors for hanging track | 9680171          |         | Combined with square hanging track                      |
| 8  | connectors for hanging track     | 9680172          |         | Combined with the "—" hanging track                     |
| 9  | Hanging wire                     | 9680163/ 9680174 |         | Hanging Wire  |
| 10 | Wire buckle                      | 9680180          |         | Place a wire buckle as a temporary fix.                 |
| 11 | screwdriver                      | 9680181          |         | Install or Disassembly of the lamp                      |
| 12 | Rod                              | 9680182          |         | Install the track wire                                  |

## 6.Track connector installation



### Please Note:

- 1.This system is a low-voltage rail, DC24V, please do not directly connect to a high-voltage circuit. Please follow the operating instructions to use the conversion power supply/drive. If the wrong selection is made by humans, it may cause the lamp to burn out.
- 2.Please cut off the power before installation. Please ensure that the wires and ordinary high-voltage wires are in contact and bundled, and protected tightly. Our company only provides technical guidance for the construction site. If you have any questions, please feel free to contact the after-sales department.
- 3.The lamps are for indoor use, IP20. Do not use it in damp and watered places or outdoors, and do not use it in high temperature scenes or in hot sun.
- 4.Before installation/change the track,pls turn off power.
- 5.The total light fixture power need to lower 85% of driver power
- 6.The above is the general operating instructions for the standard models. If there is any incomplete explanation, please contact the lighting factory in time. If the lamp is damaged due to manual operation, it is not covered by the warranty.

