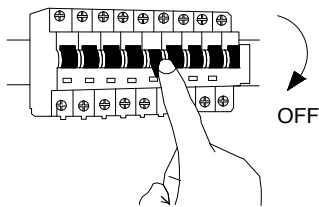
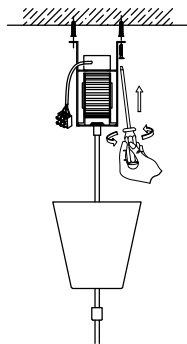


NOVA LUCE

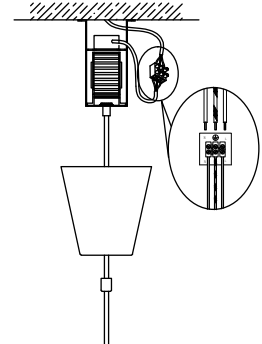
9870024



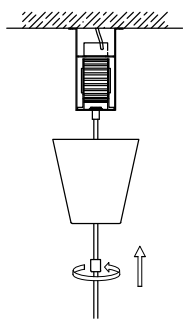
1. Turn off the general switch



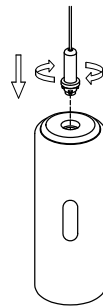
2. Drill holes, apply plastic anchors
With screws



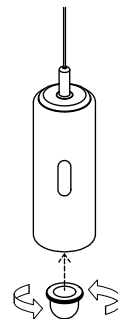
3. Connect the wires



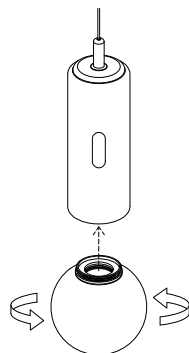
4. Apply the canopy
With the bottom screw



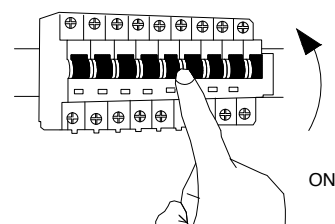
5. Insert the connector until
It bounces back



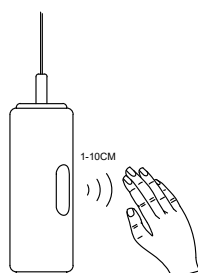
6. Twist the lens



7. Apply the glass-shade by twisting



8. Turn on the general switch



Sweep slowly
& Then move to turn it On / Off

Hold
To dim & adjust the brightness

- Sweep your hand over the sensor to switch on/off
- Keep your hand still over the sensor to activate the dimming function
- Separate Control For The Up-lighting And Down-lighting

Sweep your hand over the sensor to activate one side of the light. Then hold your hand still over the sensor to start dimming (The default setting is darkening for the first time). If you need to brighten it, move your hand away first and then put it back. When the desired brightness has been achieved, move away your hand.

Sweep your hand over the sensor again to switch on the other side of the light. At this time, the light from the present side will be switched off. Then repeat the previous operations and move your hand away when the desired light intensity has been reached.

- Synchronized Control For The Up-lighting And Down-lighting

When the adjustment of both the up-lighting and down-lighting has been finished, then following the operations above, sweep your hand over the sensor again to activate both sides of the light. If the current brightness still does not suit your need, hold your hand still over the sensor again to adjust the light intensity (The default setting is darkening for the first time). At this moment, both sides of light will adjust simultaneously (The sensor will stop working until both sides have reached the darkest or the brightest). When the intended brightness has been achieved, move your hand away.

