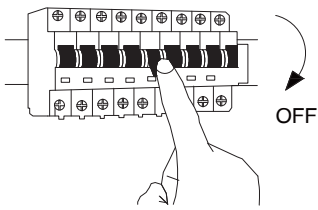
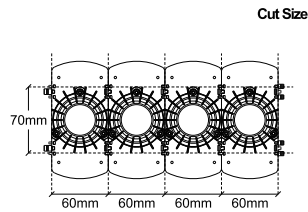


1



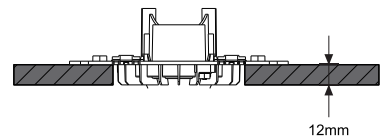
Turn off the general switch

2



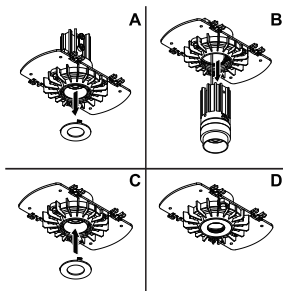
Create a CutOut

3



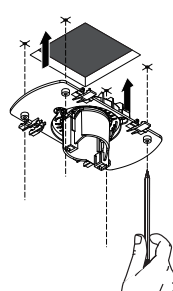
Adjust it

4



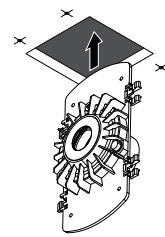
A. Remove the cap B. Dismantle the luminaire  
C. Apply the cap D. Assemble parts

5



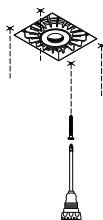
Mark where to drill holes

6



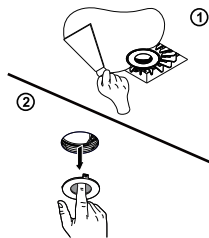
Insert part into the hole

7



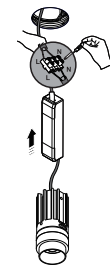
Tie up screws

8



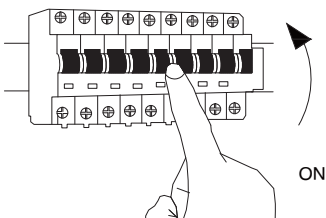
Apply a sealer to fix it into place  
Untie the cap by rotate

9



Connect wires  
insert luminaire into place

10



Turn on the general switch

11

