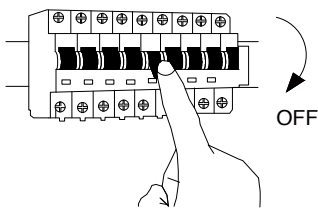
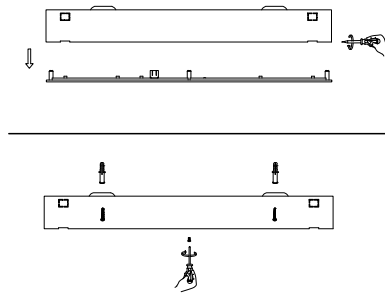


1



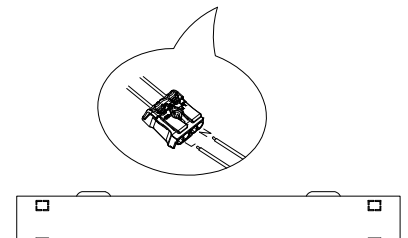
Turn off the general switch

2



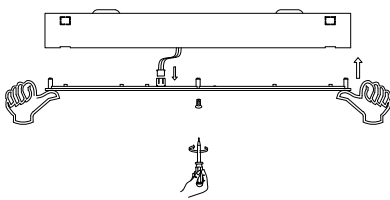
Drill holes & apply plastic anchors
With screws

3



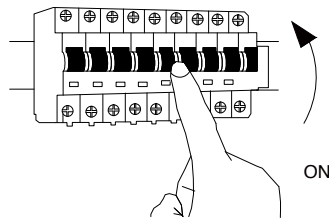
Connect the wires

4



Apply the element in to place

5

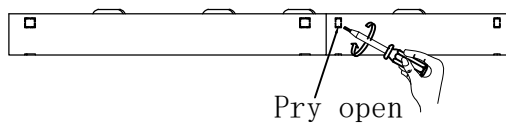


Turn on the general switch

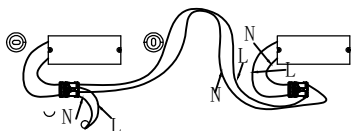



Works with 220V-240V.
In order to change the bulb or Fuse,
Turn off the general switch & Make
sure the bulb is not warm

Combination mode



Pry open



1. Turn on the lamp.
2. Within 6 seconds, press and hold the button  for 2 seconds.
3. Light flashes once = paired successfully.

If pairing fails:

1. Turn off lamp for 10 seconds and retry.
New pairing removes previous remote automatically.

