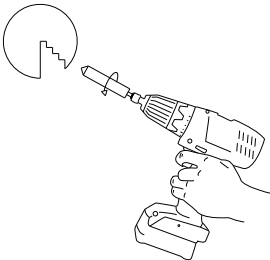
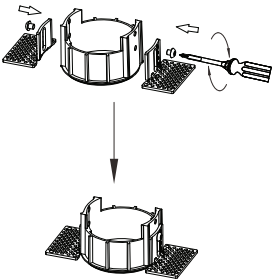


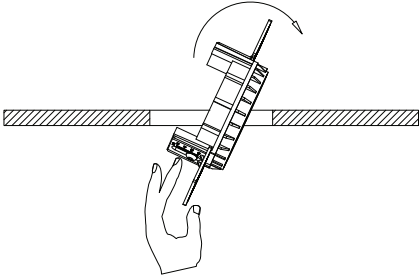
1. Turn off the general switch



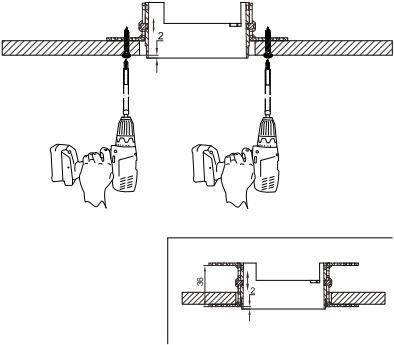
2. Drill holes



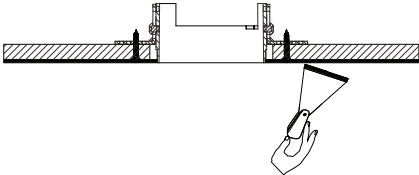
3. Apply side screws & connect parts



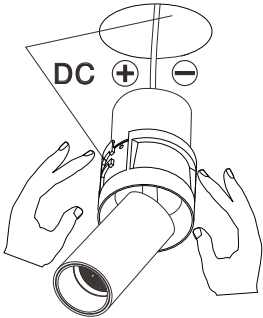
4. Insert the product into the cutout



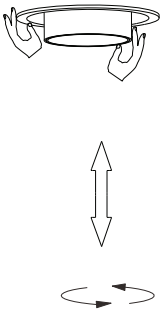
5. Make it stable bu applying screws



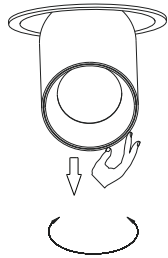
6. Fix the holes by making it dry



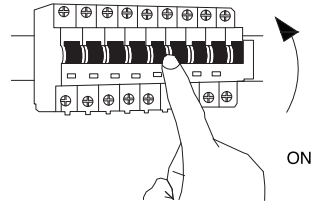
7. Connect wires



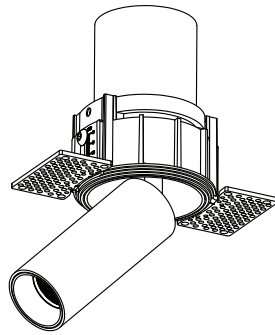
8. Press together & insert



9. Rotate the product from the bottom to make it stable



10. Turn on the general switch



1. The installation must be done by competent electricians
2. Product can not be modified.
3. Make sure the power has been switched off before installation.
4. The product is a class III luminaire and shall be connected with a constant driver according to the specifications in the above sheet.
5. When connecting more than one fixture, these are connecting in series, from plus to minus
6. The specification of the luminaire, should be stranded with  $0.5\text{mm}^2$ - $1.5\text{mm}^2$  conductor.
7. The specification for the driver means determines on the voltage and the maximum number of luminaries per loop.
8. Power should never be regulated on the secondary side.
9. See the installations on the image below.

Cutout:  6.8 - 7 cm

